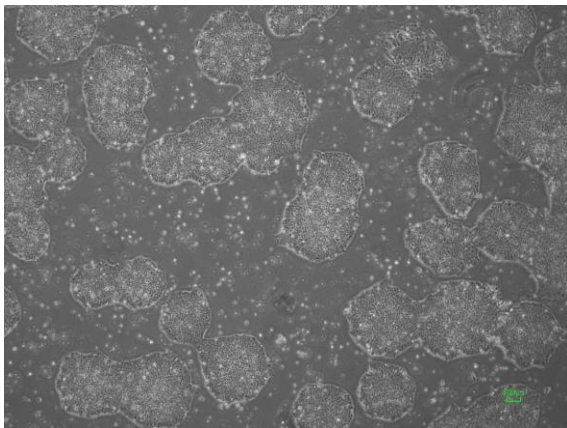
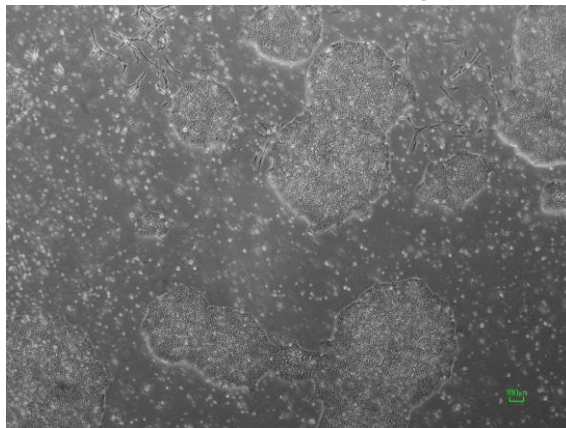


【 CiRA-jk-0031 】 Morphology of iPSC colonies

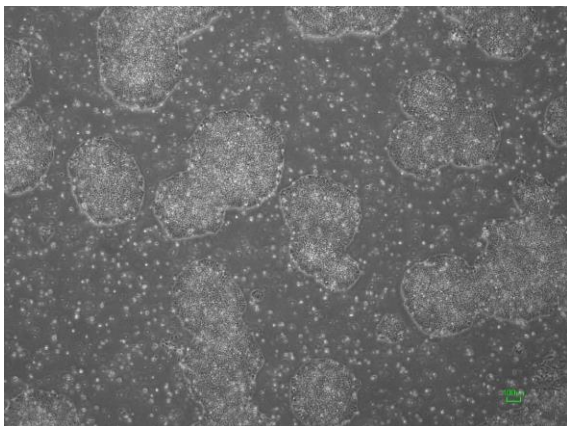
CiRA -jk-0031-A: passage-3



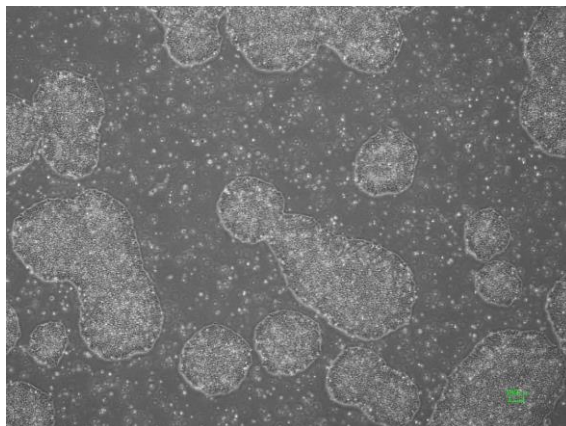
CiRA -jk-0031-B: passage-3



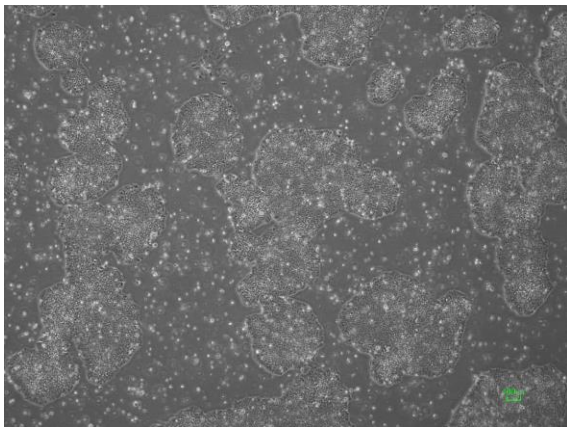
CiRA -jk-0031-C: passage-2



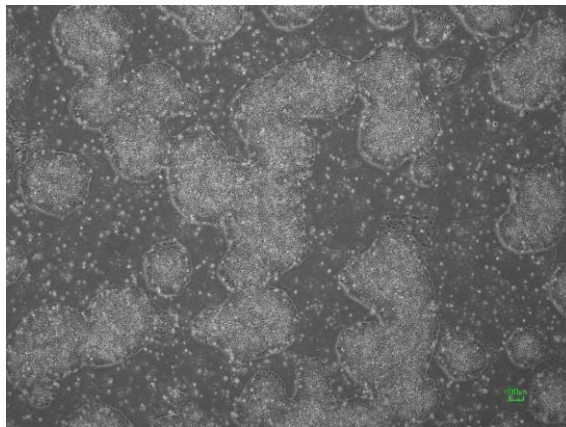
CiRA -jk-0031-D: passage-2



CiRA -jk-0031-E: passage-2



CiRA -jk-0031-F: passage-2



(All images were captured at 4x magnification)